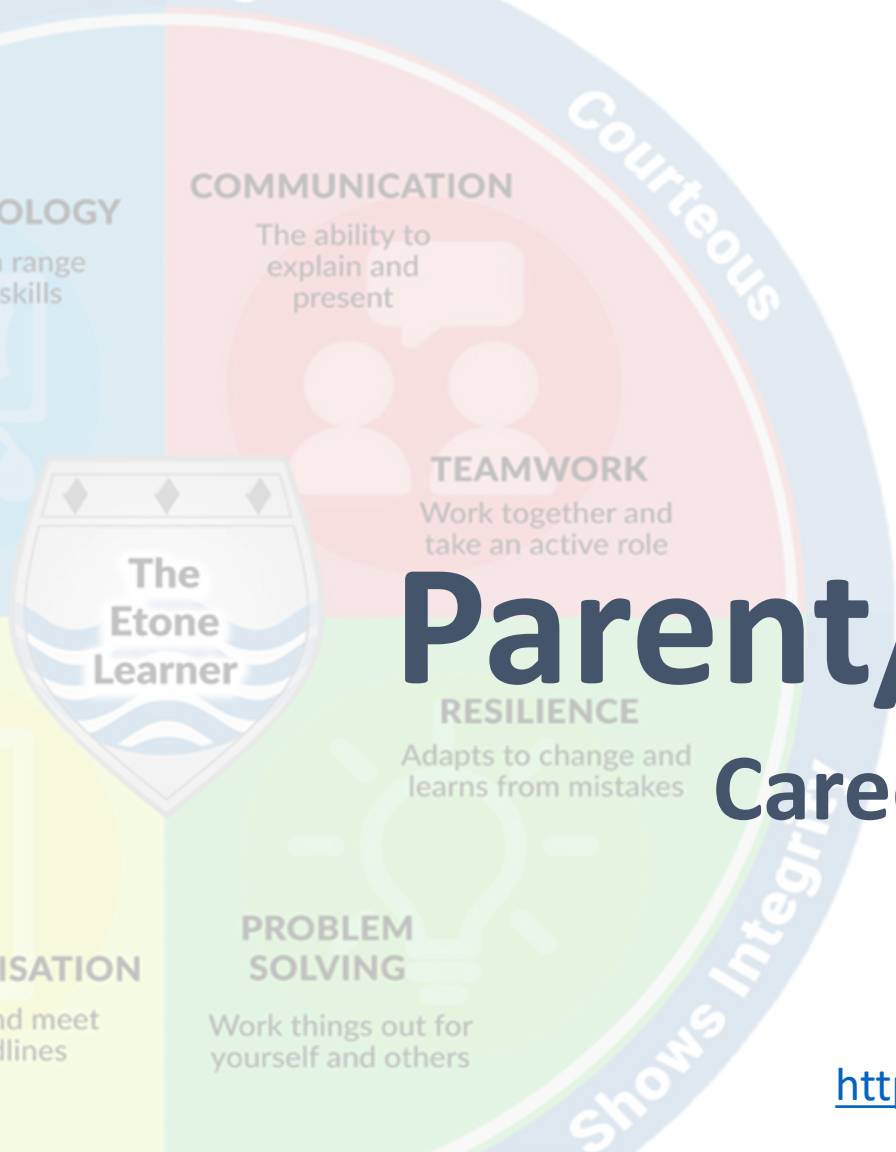




Etone College
'PROGRESS FOR ALL'



Parent/ Carer Workshop

Careers and Learning for Life

<https://www.etonecollege.co.uk/welcome-video/>



Aims

- To outline the program for Careers, Information, Advice and Guidance at Etone College.
- To show where parents and carers can find support for their children with regard to Careers
- To provide information about the Learning for Life curriculum and lessons.



Careers

What did you want to do when you were at secondary school?

What did you end up doing? Was it what you expected?

What advice and guidance did you receive?

Did you have careers lessons or interviews?

What advice would you have liked to receive that was not available at the time?



Gatsby Benchmarks



The Gatsby Benchmarks are a set of guidelines each school needs to follow they include:

1. A stable careers programme
2. Learning from career and labour market information
3. Addressing the needs of each pupil
4. Linking curriculum learning to careers
5. Encounters with employers and employees
6. Experiences of workplace
7. Encounters with further and higher education
8. Personal guidance

We use these benchmarks and the standards from the Quality in Careers Award to plan our Careers interventions at Etone College.



Quality in Careers Standard

The Gatsby benchmarks are useful but the Quality in Careers Standard is a national award with more rigorous targets obtained by very few schools - in fact our closest school is in Rugby.

We are very proud to say that, after our assessment, we have achieved this award and have been commended on our careers provision.

For our students this means they are receiving HIGH QUALITY careers interventions.

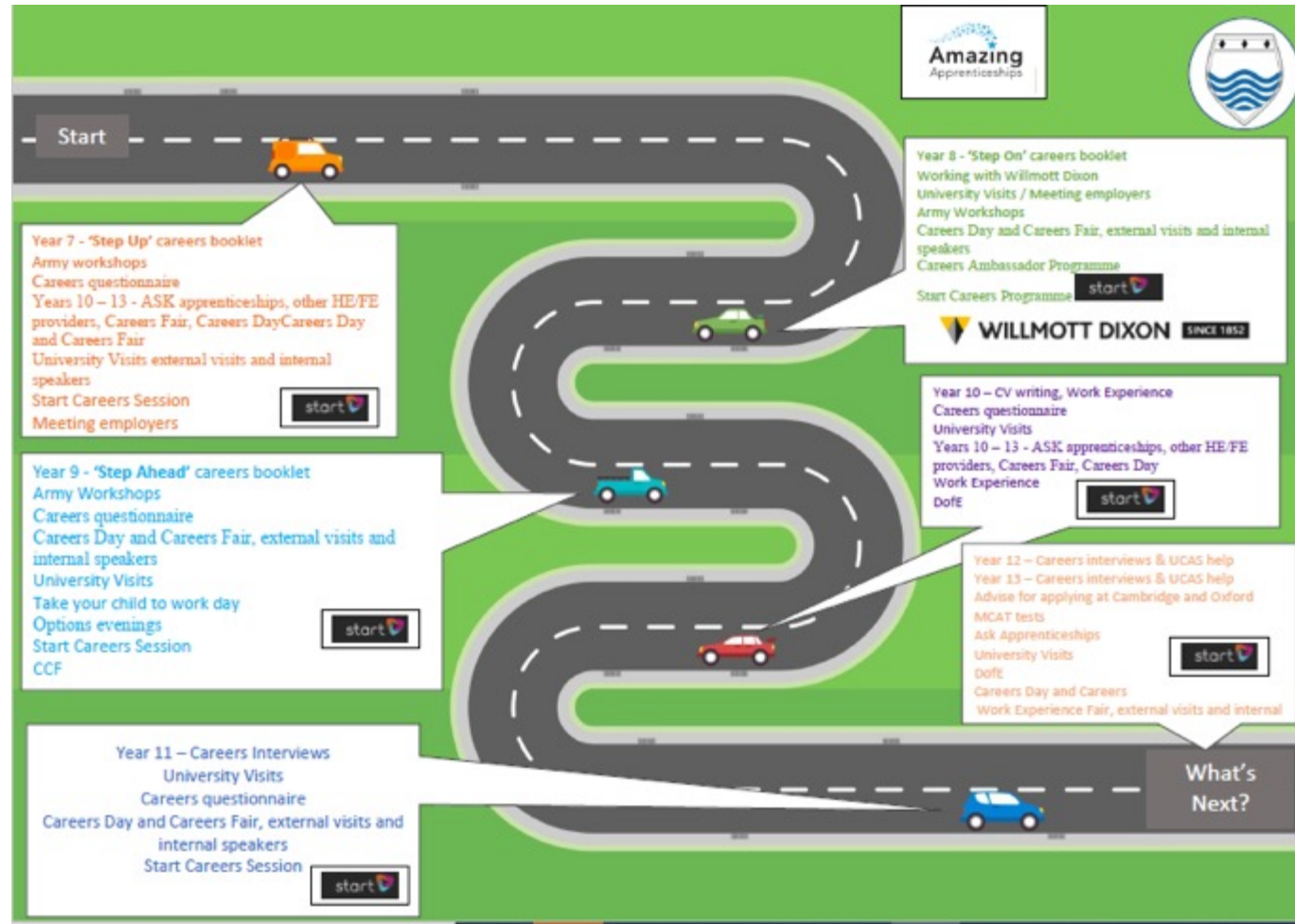
After careers interviews, we send emails to the student to outline what was discussed and next steps – these interview happen in Year 11 and 13. We encourage parents to be involved in this process and look at career options with their children. This cannot start early enough. (Gatsby Benchmark 3 and 8).



Our Provision



Etone College
"PROGRESS FOR ALL"



Work Experience

We offer Work Experience – this is a part of the Gatsby Benchmarks 5 and 6 and is very beneficial for students especially when applying for universities or apprenticeships.

We have a period of time at the end of Year 10 during which students find and apply for their placements and attend the work place of their choice.

In Year 9 we have also offered a “Take your Child to Work Day”

We tend to find this is an area where students really require the support of carers and parents to secure placements.



Employability

Our Employability Skills underpin our curriculum and reflect our ethos, of making sure everything we do provides your child with the opportunities to succeed and prepare themselves for a future of their choice. They are all linked to skills within the workplace and link to Gatsby benchmark 4.

How many of our employability skills can you name?



Name those skills



Say what you see!

Numeracy and Technology



Name those skills



Communication and Teamwork



Name those skills



Problem Solving and Resilience



Name those skills



Organisation and Initiative



Employability

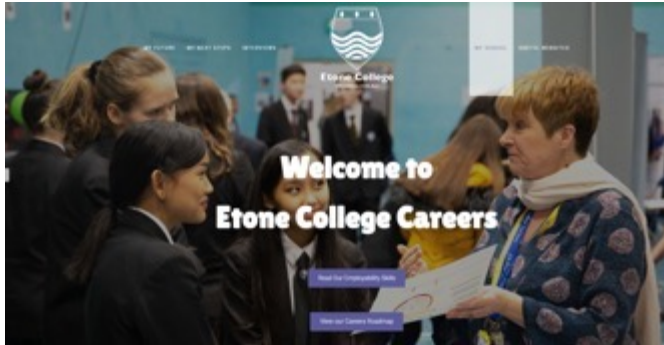


Employability Rewards

- Employability Points are rewarded to pupils when they showcase a particular skill.
- This could be from within lessons or outside with key points planned in the curriculum to allow pupils opportunities to earn them.
- Each award gives 5 points when 20 points for each skill has been awarded they receive their Employability Badge.



Where to Find Information



<https://www.etonecollege.co.uk/>

Student life
Careers

Lets have a look together as there is a lot of help on the site for parents.

Careers@etonecollege.co.uk
lbarlow@etonecollege.co.uk



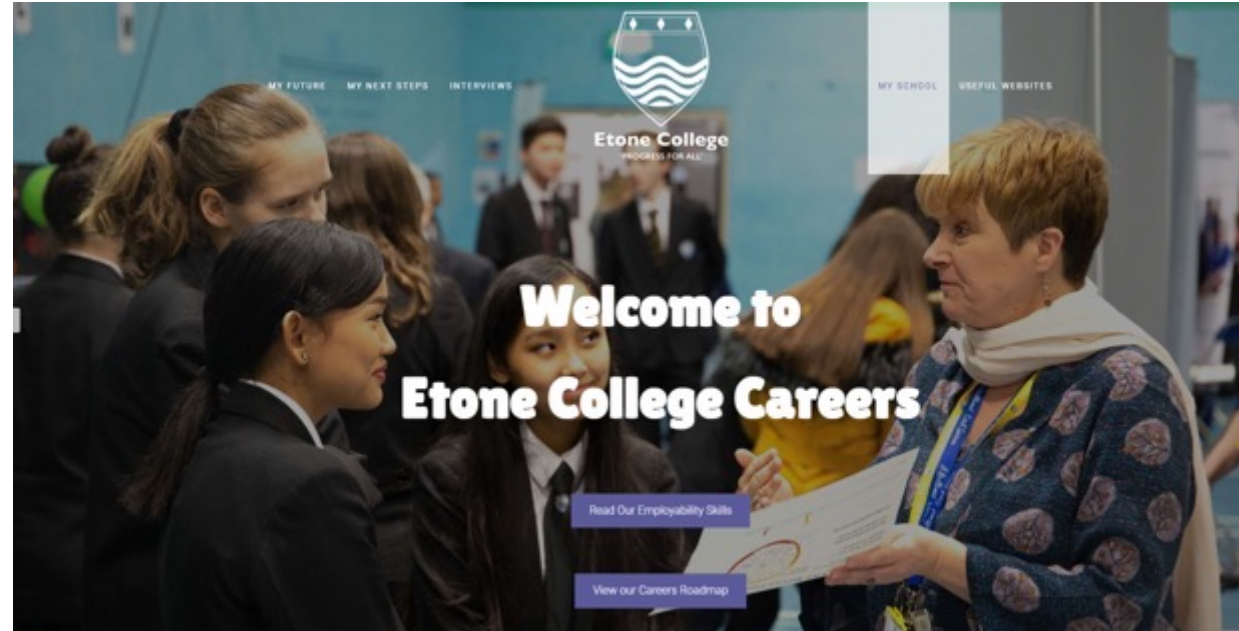
Website

If there is anything else you would find useful, please let us know.

We have Careers Café after school during which appointments can be booked that may or may not include parents.

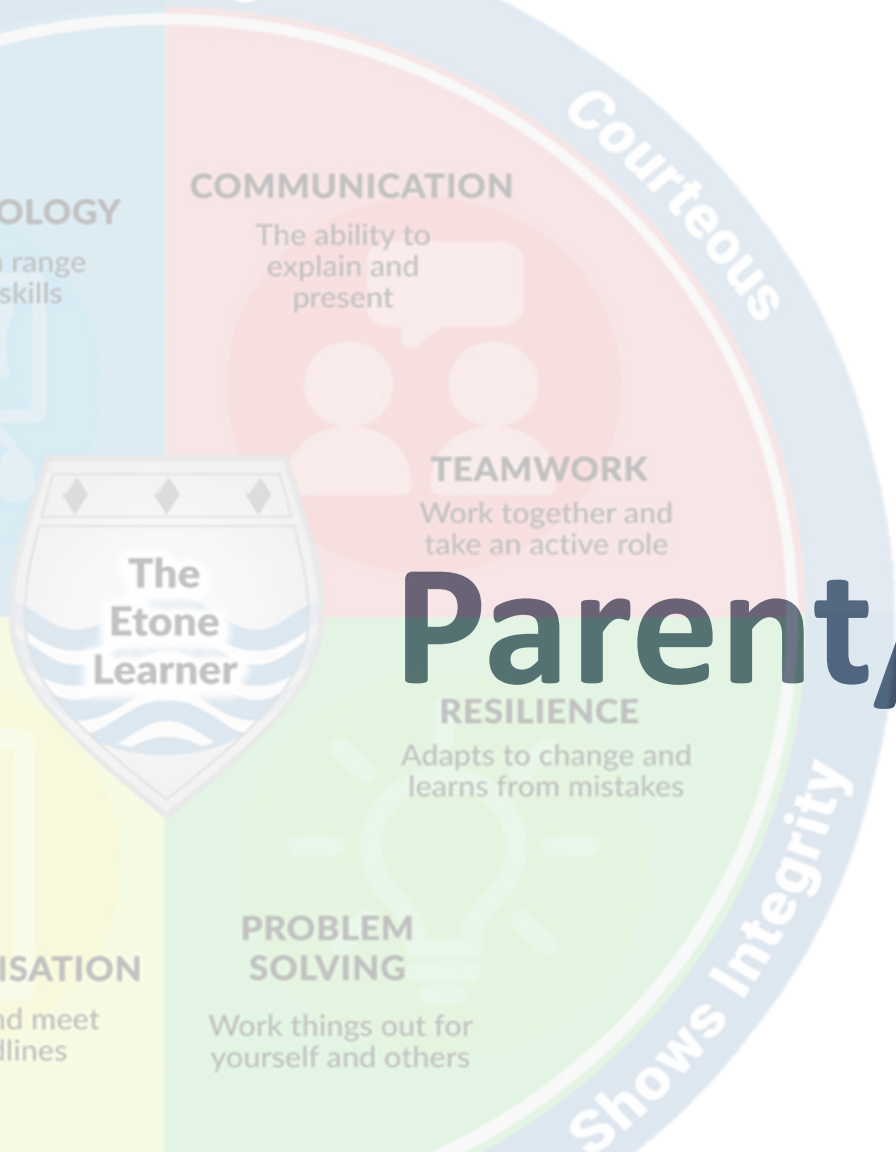
Parents can attend careers interviews with our Prospects Advisor on request

We have also had a SEND parents coffee morning and have an upcoming Sixth Form Parents Careers session





Etone College
'PROGRESS FOR ALL'



Parent/ Carer Workshop

Learning for Life



What is Learning for Life?

1. What does PHSE stand for?
2. What RSHE stand for?
3. What are the four Fundamental British Values?
4. What does SMSC stand for?
5. What is Citizenship?
6. How do we promote active citizenship at Etone?

Finding these
tricky?



What is Learning for Life? *Add answers*

1. What does PHSE stand for? Personal Social Health and Economic education – what most schools call the title of the lessons on the timetable
2. What RSHE stand for? Relationships and Sex Education (RSE) and Health Education - the taught content
3. What are the four Fundamental British Values? Democracy, Rule of Law, Individual liberty, Mutual Respect and Tolerance for those with different faiths and beliefs.
4. What does SMSC stand for? Spiritual, Moral, Social and Cultural development.
5. What is Citizenship? Teaching about the law, politics, monarchy and the way in which society works
6. How do we promote active citizenship at Etone? Various charity events, school council etc.



Statutory Requirements

- The school has a statutory duty to deliver Relationships, Sex and Health Education.
- We also have to deliver the Gatsby Benchmarks and the National Curriculum subject of Citizenship. We follow the locally agreed syllabus for RE.
- We also need to educate our pupils about Fundamental British Values and provide opportunities for Social, Moral, Spiritual and Cultural education.





Etone College
"PROGRESS FOR ALL"

How do we Deliver it?

- At Key Stage 3, pupils have one hour a week of Learning for Life (our name for the PSHE lessons).
- They also form time activities and assemblies
- Each week has a theme which links tutor time and assembly to the LFL lesson.
- We also have a wide range of enrichment activities such as Loudmouth Theatre, the Police, the Army and Driving Ambitions
- There is provision within each subject such as healthy lifestyles in PE and Black History Month.
- Whole school charity events and events such as Mental Health Week



Active Citizenship



Etone College
"PROGRESS FOR ALL"

Acts of kindness from pupils

By CLAIRE HARRISON
News Reporter

ACTS of kindness have been a recurring theme at a secondary school with a host of charity events.

Students at Etone College have spent the past week thinking of others.

Some took part in the Nativity Remembrance Sunday service, paying homage to the fallen.

In school, they joined in events for World Kindness Day on November 13 and also took part in events for Bullying Week.

One day they were asked to wear odd socks to support standing up against bullying while also taking part to activities around supporting each other.

They were also asked to come up with random acts of kindness to brighten someone's day, from giving a compliment to helping someone you wouldn't usually interact with.

To round up the week of kindness, they took part in a non-uniform day for Children in Need.

In the last week, they had raised £150 for the national foundation, with more expected to come in.



20 WEDNESDAY DECEMBER 22, 2021

NUNEATON NEWS

Kind-hearted pupils donate food and gifts to Salvation Army and foodbank

By CLAIRE HARRISON

BOXES and boxes of food and a car full of toys were handed over by big-hearted pupils at a Nuneaton school.

Continuing its theme of kindness, Etone College launched a drive to collect toys and gifts on behalf of the Nuneaton Salvation Army and food for Nuneaton Foodbank.

Pupils were asked to make donations to the good causes to the run-up to Christmas - and they pulled all of the stops, they even needed an overnight donation point to store all of the goods.

In fact, the school had enough food donations to fill 22 boxes

and enough toys to fill a car. A spokesman for the Salvation Army said: "It was truly incredible and heart-warming to see young people care so much about others. It really highlights our own values of caring and showing community spirit."

Nuneaton Foodbank added: "It is heart-breaking to hear the stories of those who need help for the basic we all take for granted on a daily basis.

"Although we can only provide as much support as possible, we need as much help from others to get the job done."

"The pupils, parents and staff at Etone have been so generous. It is great to see these young people doing their bit for the local area."



Boxes of food and a car load of toys and gifts have been collected by Etone College pupils



Proudly working alongside



Etone Experience



Etone College
"PROGRESS FOR ALL"



What do you think?

- One of the titles for the units in RSHE is Internet Safety and Harm
- At secondary school, what content do you think this unit may cover?



Answers

- For most people the internet is an integral part of life and has many benefits.
- The benefits of rationing time spent online, the risks of excessive time spent on electronic devices and the impact of positive and negative content online on their own and others' mental and physical wellbeing.
- Consider the effect of their online actions on others and know how to recognise and display respectful behaviour online and the importance of keeping personal information private.
- Why social media, some computer games and online gaming, for example, are age restricted.
- The internet can also be a negative place where online abuse, trolling, bullying and harassment can take place, which can have a negative impact on mental health.
- How to be a discerning consumer of information online including understanding that information, including that from search engines, is ranked, selected and targeted.
- Where and how to report concerns and get support with issues online.





Etone College
"PROGRESS FOR ALL"

Theme of the Week

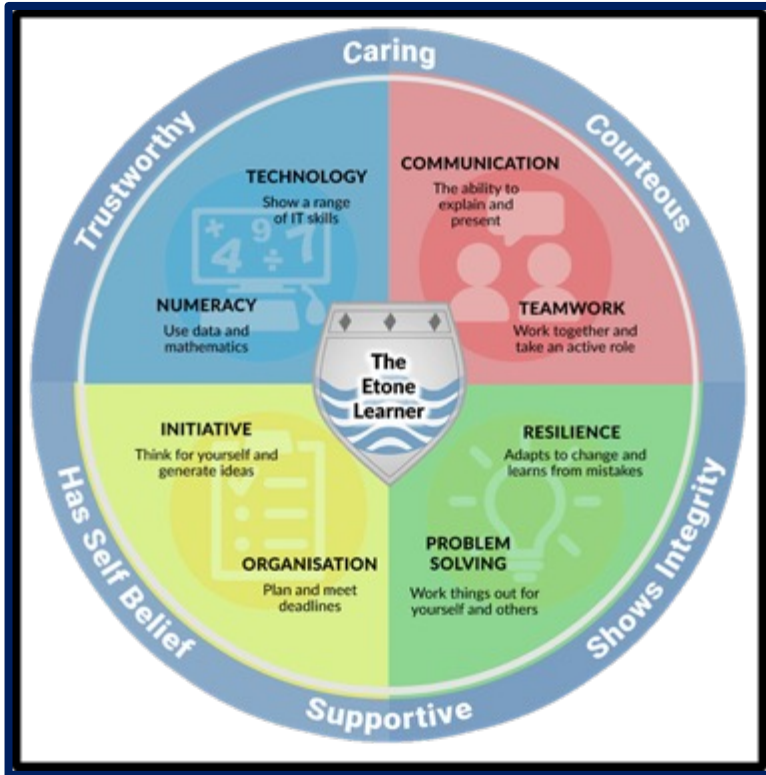
Etone College				
THEME OF THE WEEK Summer 2022 - Half Term I				
W/C	Theme of the Week	Assembly	School Council (L Barlow)	Other Events
25/4	The Etone Learner 	Expectations and Aspirations Attendance Matters (I Smith and R Price. Launch of Etone Value (Being Trustworthy) Year Assembly	Planning for Mental Health Assembly	22nd Stephen Lawrence Day 23rd St Georges Day and Shakespeare Day
2/5	Healthy Lifestyles 	Healthy Lifestyles and Keeping Active (PE Department) House Assembly	Raising Awareness of Etone Values	Bike to School Day (4/5) Deaf Awareness Week
9/5	Progress Praise 	Progress Praise P Bowen Year Assemblies	Raising Awareness of Etone Values	VE Day (8/5)
16/5	Keeping Healthy, Safe and Resisting Peer Pressure 	Keeping Healthy and Staying Safe and How to Resist Peer Pressure House Assembly		International Day against Homophobia, Transphobia and Biphobia (17/5)
23/5	Mental Health Awareness 	Mental Health Awareness (R Price) House Assembly	Mental Health Assembly	Mental Health Awareness Week
HALF TERM				

Each week Etone College recognises a different theme – this is known as our Theme of the Week. The Theme of the Week recognises important local, national and international events as well as linking into our Learning for Life programme which delivers Relationships, Sex and Health Education as well as Citizenship, RE and Careers.

The theme to start the year was what it means to be an **Etone Learner** with a focus on employability skills, values, expectations and aspirations.



The Etone Learner



The Etone Learner underpins everything we do at Etone. It combines eight key Employability Skills with six core Etone Values which together provide the make up of what we expect our pupils to be.

Each term we have a value focus with awards handed out weekly to pupils who showcase the particular talent. For example this half term it is **being supportive.**



Content

Our lessons include activities such as:

- Debating
- Voting
- Group discussion
- Literacy tasks
- Comprehension exercises
- Case studies such as the General Election and Brexit.
- Sensitive topics are covered by specially trained members of staff or external providers through workshops.



Policy

- Our statutory RSHE policy can be found on our school website along with information for parents.
- There is detail of what is covered in the curriculum and when for each year group as well as a copy of the statutory curriculum towards the back of the policy.



Active Citizenship

- Duke of Edinburgh
- Raising awareness e.g. assemblies
- CCF
- Student Leadership opportunities
- House Charities
- Whole school fund raising events
- Community projects
- School Council and Etone Elect



How can Parents Help?

- Discuss current affairs
- Read the information sent home about Careers and discuss with your child and visit our website regularly
- Help to arrange work experience and discuss careers interviews at key times
- “Take your Child to Work”
- Discuss sensitive issues at home
- Be mindful of wellbeing and promote the top 5 tips for wellbeing
- Follow us on Twitter and check out our news events
- Continue to kindly support charity events



Pupil Opportunities

- Prefects
- School Council
- Careers Ambassadors
- Etone Elect
- Sixth Form Team and committees
- Etone Press Core
- Youth Health Champions
- D of E
- House Captains
- Eco Council
- Combined Cadet Force
- The Great Debate
- Subject ambassadors
- Extracurricular Rewards
- Media Experts
- Vice captains



Evaluation

Please tell us what you found useful about this session:

Please tell us what you would like to see more of next time:

Would you like to attend further sessions. If so what would you like the focus to be?



Thank you for attending

Safe journey home.

