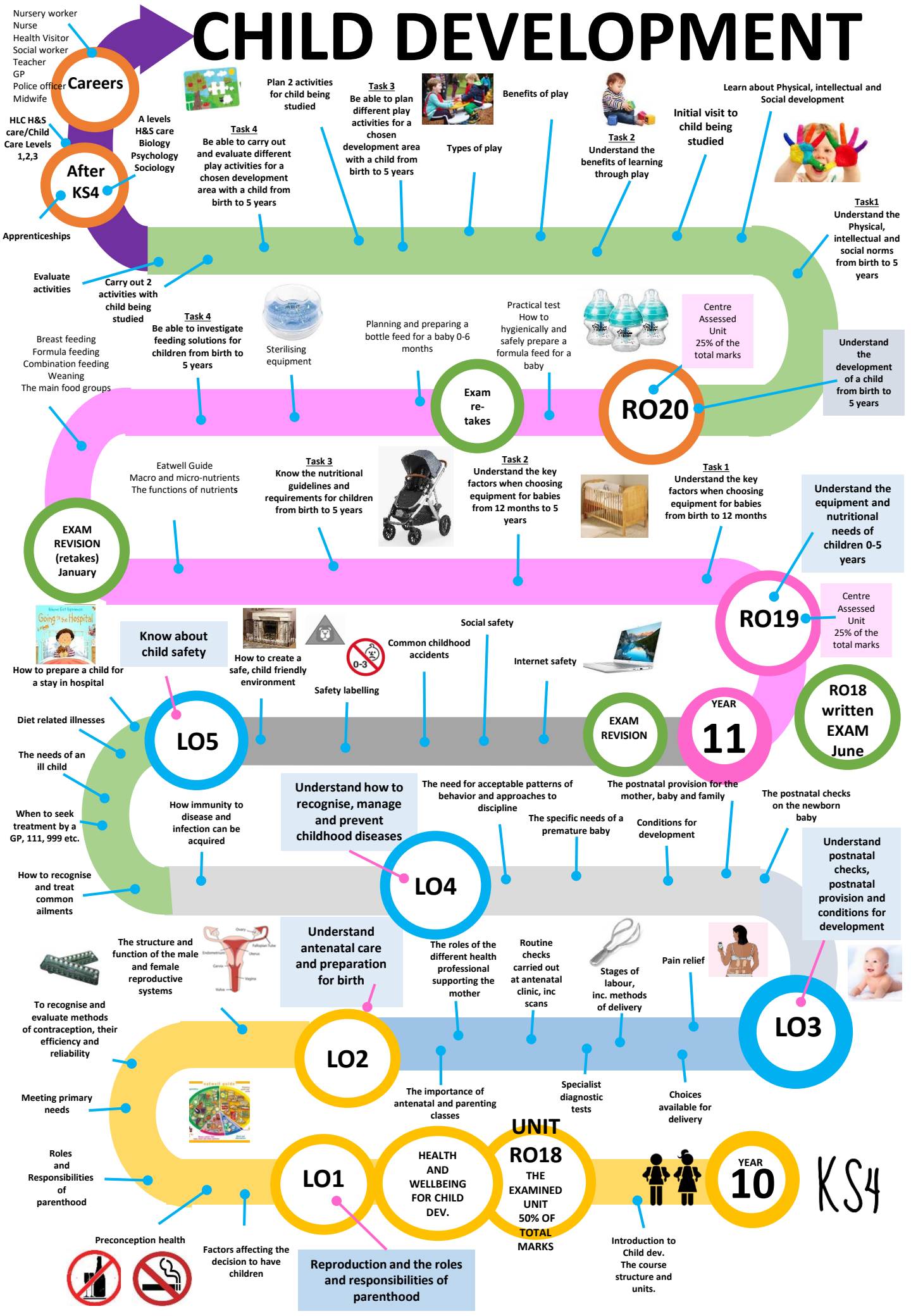


# CHILD DEVELOPMENT



## Careers

- Nursery worker
- Nurse
- Health Visitor
- Social worker
- Teacher
- GP
- Police officer
- Midwife

## After KS4

- HLC H&S care/Child Care Levels 1,2,3
- Apprenticeships

- A levels
- H&S care
- Biology
- Psychology
- Sociology



Plan 2 activities for child being studied

**Task 4**  
Be able to carry out and evaluate different play activities for a chosen development area with a child from birth to 5 years

**Task 3**  
Be able to plan different play activities for a chosen development area with a child from birth to 5 years



Benefits of play

Types of play



**Task 2**  
Understand the benefits of learning through play

Initial visit to child being studied



Learn about Physical, intellectual and Social development

**Task 1**  
Understand the Physical, intellectual and social norms from birth to 5 years

Evaluate activities

Carry out 2 activities with child being studied

**Task 4**  
Be able to investigate feeding solutions for children from birth to 5 years



Sterilising equipment

Planning and preparing a bottle feed for a baby 0-6 months

Practical test  
How to hygienically and safely prepare a formula feed for a baby



Centre Assessed Unit  
25% of the total marks

Understand the development of a child from birth to 5 years

## RO20

- Breast feeding
- Formula feeding
- Combination feeding
- Weaning
- The main food groups

## Exam re-takes

Eatwell Guide  
Macro and micro-nutrients  
The functions of nutrients

**Task 3**  
Know the nutritional guidelines and requirements for children from birth to 5 years



**Task 2**  
Understand the key factors when choosing equipment for babies from 12 months to 5 years



**Task 1**  
Understand the key factors when choosing equipment for babies from birth to 12 months

Understand the equipment and nutritional needs of children 0-5 years

## EXAM REVISION (retakes) January



Know about child safety



How to create a safe, child friendly environment



Safety labelling

Common childhood accidents

Social safety

Internet safety



## RO19

Centre Assessed Unit  
25% of the total marks

Diet related illnesses

The needs of an ill child

When to seek treatment by a GP, 111, 999 etc.

How to recognise and treat common ailments

## LO5

How immunity to disease and infection can be acquired

Understand how to recognise, manage and prevent childhood diseases

The need for acceptable patterns of behavior and approaches to discipline

The specific needs of a premature baby

Conditions for development

The postnatal provision for the mother, baby and family

The postnatal checks on the newborn baby

Understand postnatal checks, postnatal provision and conditions for development

## LO4

The structure and function of the male and female reproductive systems



Understand antenatal care and preparation for birth

The roles of the different health professional supporting the mother

Routine checks carried out at antenatal clinic, inc scans



Stages of labour, inc. methods of delivery

Pain relief



## LO3

To recognise and evaluate methods of contraception, their efficiency and reliability

Meeting primary needs

Roles and Responsibilities of parenthood



The importance of antenatal and parenting classes

Specialist diagnostic tests

Choices available for delivery

## LO2

## LO1

Factors affecting the decision to have children

Reproduction and the roles and responsibilities of parenthood



UNIT RO18 THE EXAMINED UNIT 50% OF TOTAL MARKS



YEAR 10

KS4