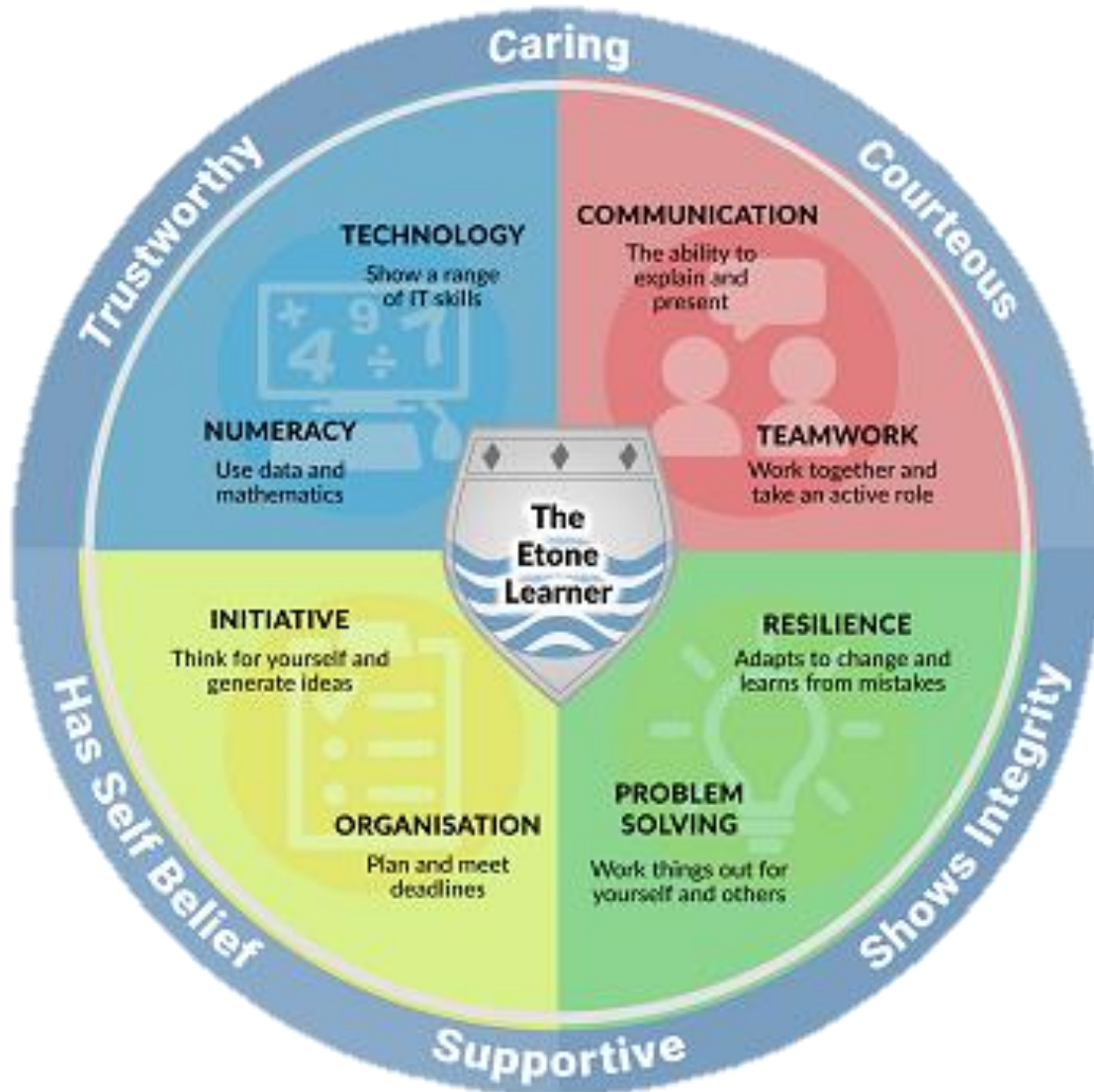


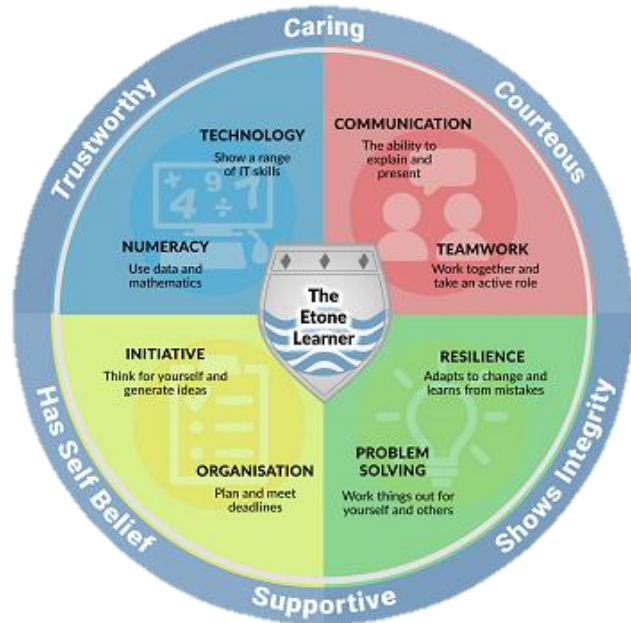
# ETONE VALUES



## What are the six Etone Learner Values?

**Caring**  
**Courteous**  
**Shows integrity**  
**Supportive**  
**Self-belief**  
**Trustworthy**

# ETONE VALUES



We have a set of school values around the edge of the Etone Learner which appear in every assembly. These are our Etone values which we would like you to demonstrate each and every day.

Every half term we will have a focus and form tutors will reward a member of their form for displaying the value. They will receive a certificate and 5 House Points.

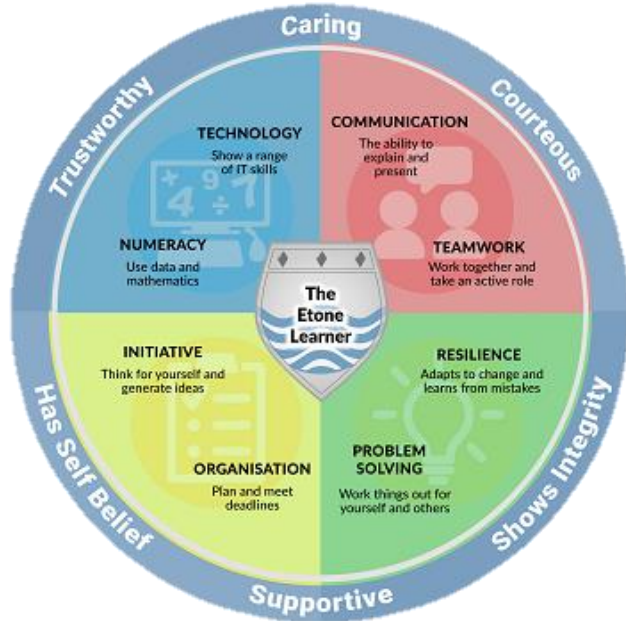
This half term the certificates are for  
**TRUSTWORTHY**

Pupils nominated will be entered into a prize drawer by their Head of House at the end of the half term.

Your tutor will award a member of your form group 5 House Points and a certificate each week. This will be for demonstrating the Etone value for that half term.

Every pupil who has had a certificate will be entered into a Prize Draw for their House and the chance to win a gift voucher or prize,





# TRUSTWORTHY

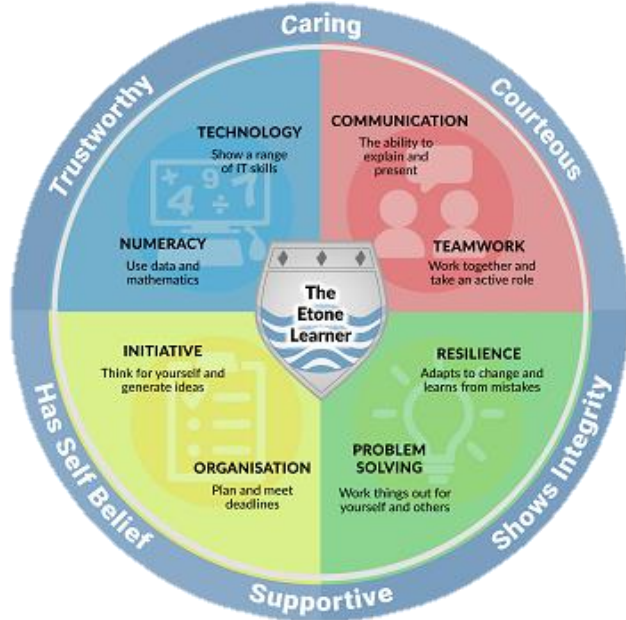
**This is our Etone Value for this half term.**

**Let's take a look at what it means and how we can show it.**





# ETONE VALUES

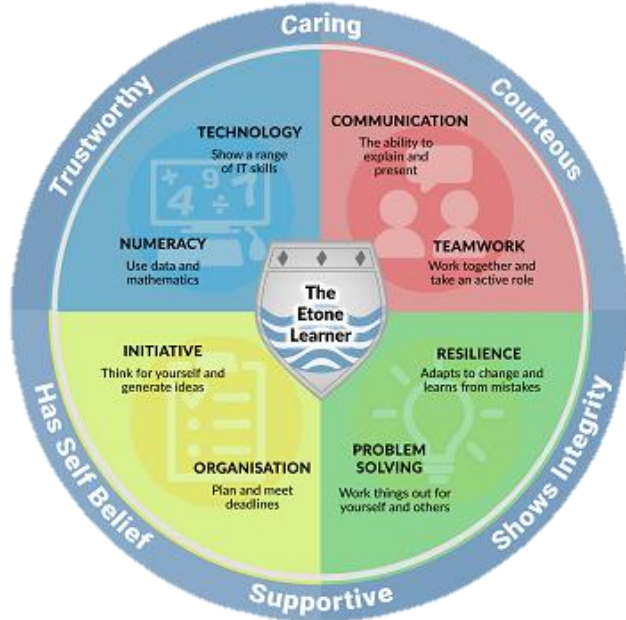


## Trustworthy – what it means

- **Being open and honest**
- **Being dependable**
- **Being reliable, and worthy of confidence**
- **Consistently delivering on promises and commitments**



# ETONE VALUES



## Trustworthy – how I can show it

- Do your best on all assignments and projects.
- People can rely on you to turn up on time and to do what is asked of you.
- Offer support to friends and give them responsible advice with schoolwork.
- Be kind to others and treat everyone as you wish to be treated, so people know your true self and character.

- *Can you think of any others?*





## Trustworthy – Jason Fox (SAS Who Dares Wins)

**“Trust is key in the military. You can’t be in a million places at once, you have to trust the people around you to do the work...”**

**“Most people generally don’t want to be untrustworthy, they just do human things and mess up here and there. But maybe that’s their learning curve. You’re better off trusting everyone and then along the way learning about individuals’ strengths and weaknesses, but still retaining that trust”**

# ETONE VALUES



**Our School Community is grounded in trust so that we can all feel safe and valued.**

**A very important part of this is that we are a telling School – we do not tolerate bullying of any kind and firmly believe that everyone should be treated equally.**

**This links to the British Value of mutual tolerance and respect.**



WE ARE A  
**TELLING**  
SCHOOL

If somebody upsets or hurts you or one of your friends, or somebody is in any danger...

**YOU MUST TELL SOMEONE.**

Speak to your **HEAD OF HOUSE** or a member of the **LEADERSHIP TEAM.**





# Take Pride in your Achievements



## We are all Eton Learners:

- Be proud to achieve
- Be pleased for others when they achieve and congratulate them
- Celebrate success
- Wear your badges with pride
- Take advantage of opportunities to participate
- Be a student leader
- Join a club
- Volunteer

