



ETONE COLLEGE NEWSLETTER

SUMMER 2020 FEATURING...

- RESULTS DAY INFORMATION
- MACBETH POSTER CHALLENGE
- SIXTH FORM ENROLMENT



RESULTS DAY INFORMATION

Results will be available as follows:

A Level/AS Level/BTEC Level 3 – 13th August 2020

GCSE/BTEC Level 2 – 20th August 2020

You will receive a letter advising you of the time you can collect your results and detailing the arrangements that have been put in place to ensure a safe environment during results day. To keep numbers inside to a minimum, please do not bring your parents/ carers or friends into the building with you.

Important Notice: September 2020 Return Information can be found on the school website.

The September term will commence for pupils on the below dates. Full details can be found in the return to school letter **here**.

| Date | Year Group | Arrival time |
|---|--|--------------|
| Tuesday 1 st September & Wednesday 2 nd September - Staff Training Days (School closed) | | |
| Thursday 3 rd September | Year 7 (Main Entrance) & Year 12 (Sixth Form) only | 8.45am |
| Friday 4 th September | Year 7 | 8.45am |
| | Year 8 | 8.50am |
| | Year 9 | 9.50am |
| | Year 10 | 10.50am |
| | Year 11 | 11.50pm |
| | Year 12 | 1.00pm |
| | Year 13 | 10.30am |



SIXTH FORM ENROLMENT

Sixth Form enrolment for internal applicants will take place on GCSE Results day on 20th August. Following the collection of your results in your allocated time slot, you will have the opportunity to enrol with a member of the Sixth Form leadership team.

Sixth Form enrolment for external applicants will take place on Thursday 20th August between the hours of 12:30pm – 2:30pm. In order to enrol you into our Sixth Form we need you to provide the following:

- A printed copy of your GCSE results
- A valid form of identification (passport or birth certificate)

Please ensure that you have these with you at the time of enrolment.

If you cannot attend on results day, there will be an additional opportunity for enrolment on Monday 24th August between the hours of 9:30am-1:30pm.

Enrolment will take place in the main Sixth Form block. Please report to the Sixth Form Reception entrance, located on the corner of Trent Road. Please also note that there will be social distancing procedures in place with a one in, one out queue system.

In order to enrol you into our Sixth Form we need you to provide a printed copy of your GCSE results. Please ensure that you have these with you at the time of enrolment.


We will look forward to congratulating you on your GCSE results and welcoming you to Etone College Sixth Form.



TRIVIA TUESDAYS

Thank you to everyone who gets involved with our weekly trivia. Would you have guessed these two correctly?

Join us on Twitter every Tuesday for #TriviaTuesdays!

 **Etone College**
@EtoneCollege

We're back with #TriviaTuesday !💡 Submit your answer below and come back tomorrow to see if you were correct!📌📌

Which lobe of the human brain is responsible for vision?



 **Etone College**
@EtoneCollege

#TriviaTuesday 🧠💡

Which desert is the largest in the world? 🌵

Submit your answer 📌 Come back tomorrow to see if you were correct!

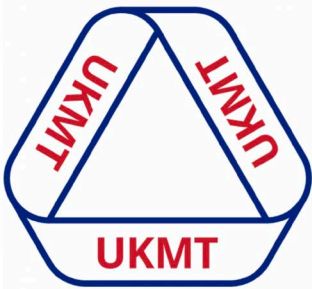
| Desert | Percentage |
|-----------------------------|------------|
| The Antarctic Desert | 70% |
| The Gobi Desert | 10% |
| The Namib Desert | 0% |
| The Sahara Desert | 20% |

UK MATHEMATICS TRUST JUNIOR CHALLENGE

A huge congratulations to everyone involved who participated in the UK Mathematics Trust Junior Maths Challenge at the beginning of July.

Etone College achieved two Gold awards, three Silver and THIRTEEN Bronze. A really great results for the Maths department.

 WWW.ETONECOLLEGE.CO.UK  [@ETONECOLLEGE](https://twitter.com/ETONECOLLEGE)  Vimeo.COM/MATRIXACADEMYTRUST



**United Kingdom
Mathematics Trust**

TWEET, TWEET

THE LATEST NEWS FROM OUR TWITTER ACCOUNTS

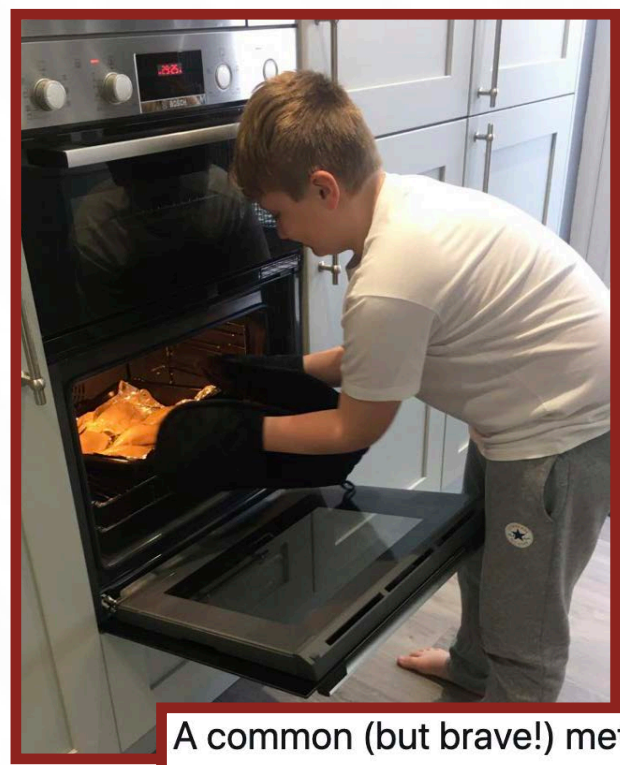


We love to see what you have been up to via our Twitter account, one of the most popular tags we are getting lately is to see what wonderful concoctions you have been baking or cooking.

Below you can see just a glimpse of some of the dishes you have shared with us. Please continue to share these with us over the Summer break!



NECOLLEGE  [Vimeo.COM/MATRIXACADEMYTRUST](https://vimeo.com/matrixacademytrust)

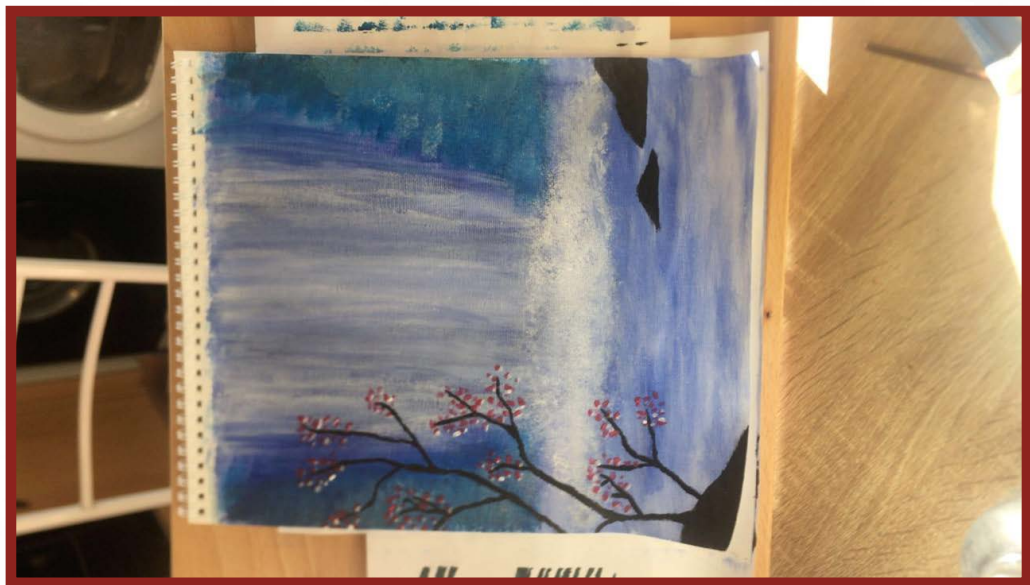


A common (but brave!) method of testing to see if the meringue is properly whisked! Looks like this one was fine! Great work once again! 😊🍓 @EtoneCollege



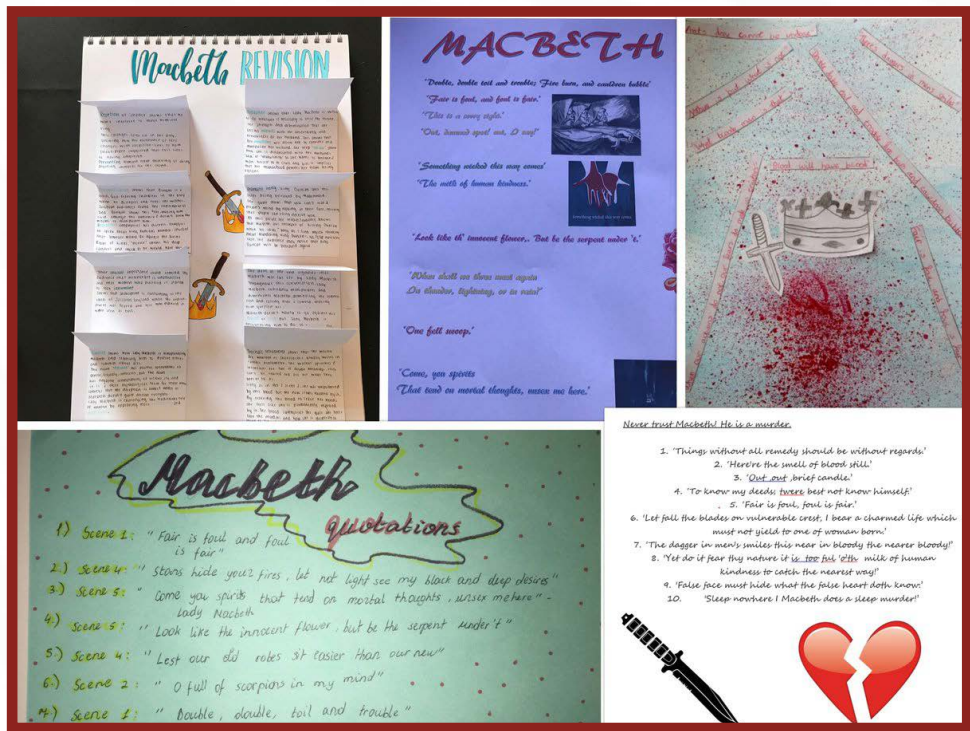
ARTIST IN THE MAKING!

A beautiful nature painting done by Natasha P! Gorgeous tonal range used for the water and a really strong composition! Nature has so many wonderful things for us to use as inspiration, I wonder what's next for this artist in the making!



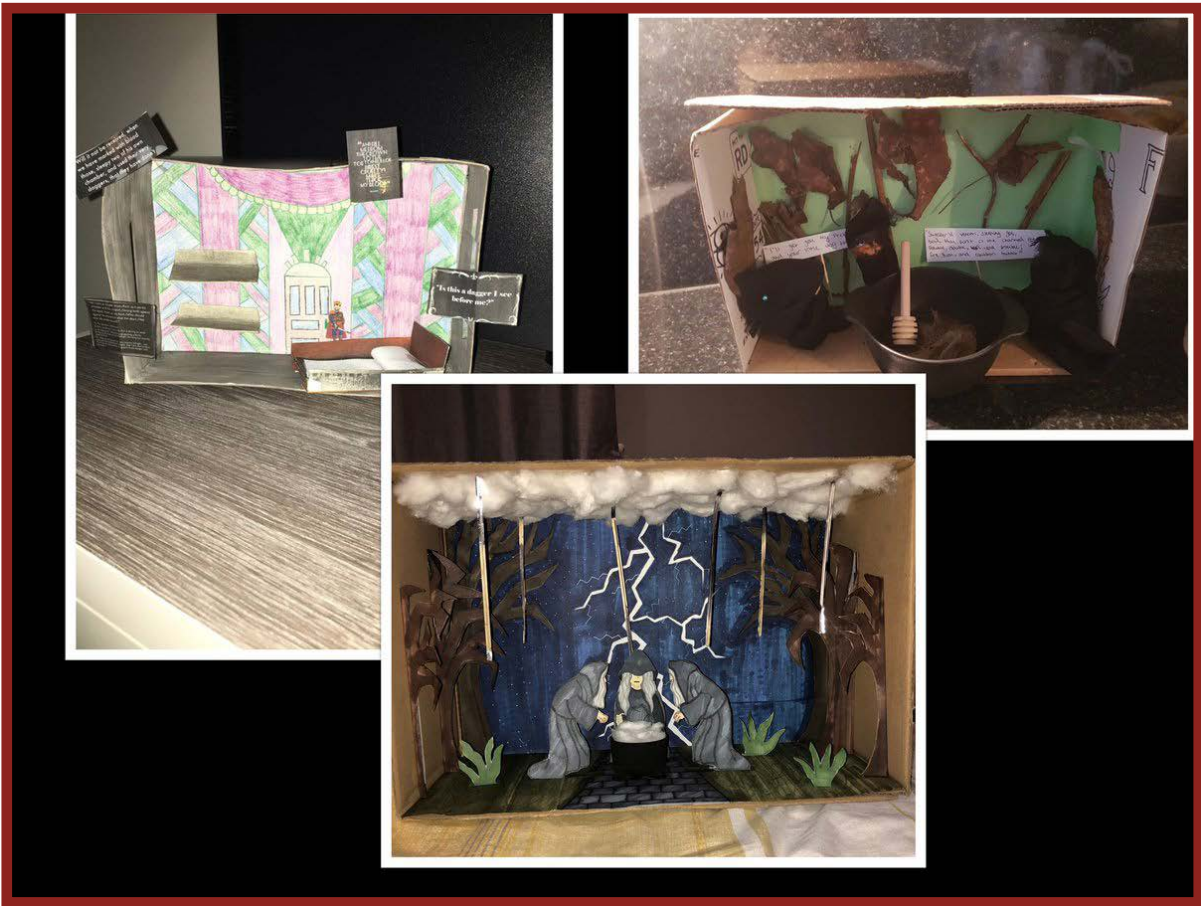
MACBETH POSTER CHALLENGE

Thank you everyone for your fantastic efforts in our Year 9 Macbeth Quotation Poster Challenge. We had a vast amount of brilliant entries. We can now announce that the winners were: Aliyah B, Luke H, Sienna D, Mirela N and Shannon C.



MACBETH DIORAMA CHALLENGE

We can also announce that the winners of the Year 9 Macbeth Diorama Challenge were: Maddison O, Sophie H and Muhammad M. Well done on your fantastic efforts and a massive congratulations!



All the winners will be able to collect their prizes upon our return to school.

ICE HOCKEY AWARD

A massive well done to W Shields in Year 10 who has received an award for 'Best Defenceman' from Telford U15's Ice Hockey club. A brilliant achievement!



BLM PARENTAL INFORMATION BOOKLET

A PARENT'S GUIDE TO BLACK LIVES MATTER



Resources, Activities, and Tips for Families to empower children to work towards racial equality

Yoopies  #StrongerUnited



WWW.ETONECOLLEGE.CO.UK



[@ETONECOLLEGE](https://twitter.com/ETONECOLLEGE)



[Vimeo.COM/MATRIXACADEMYTRUST](https://vimeo.com/matrixacademytrust)

[Click here to read the Parent Guide.](#)